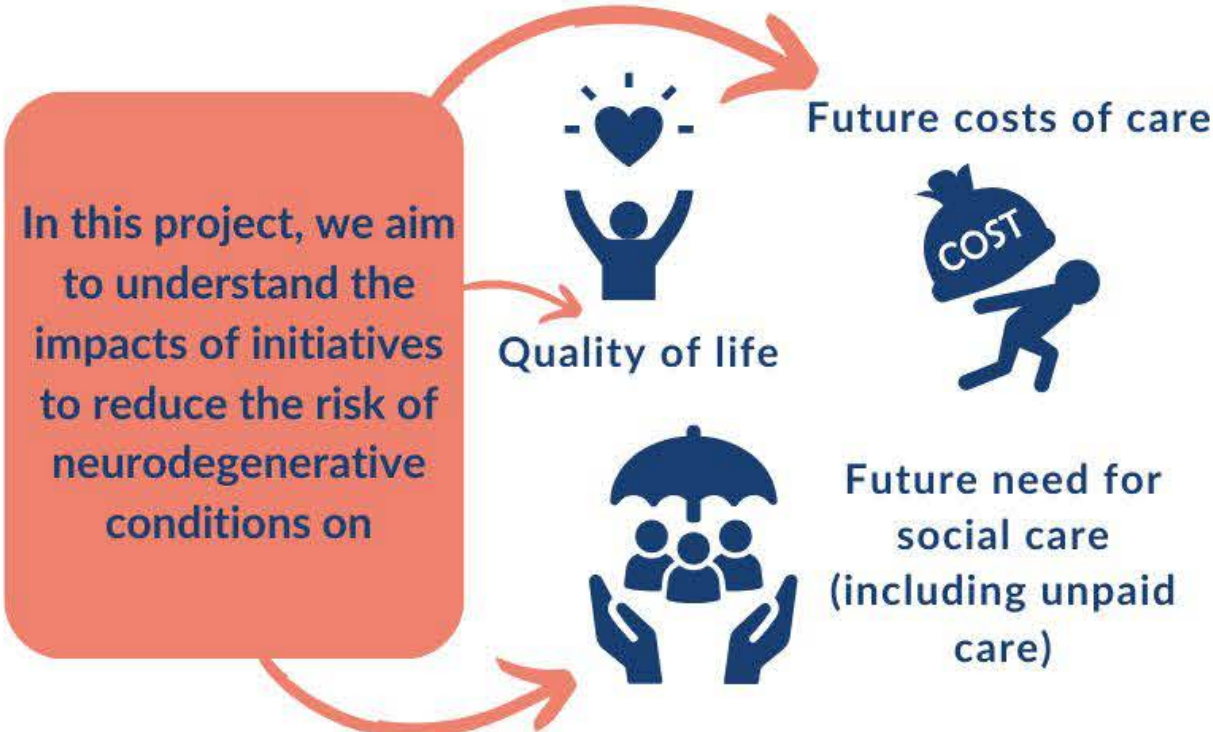


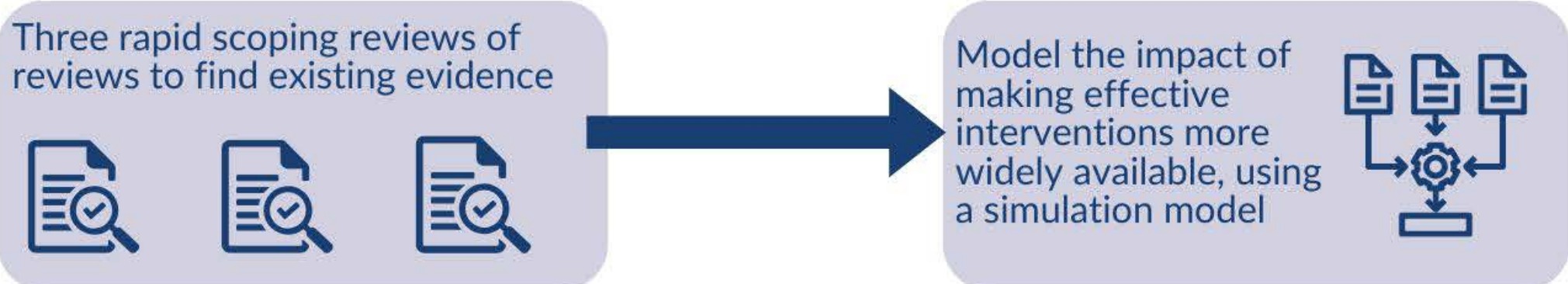
Can interventions reduce the need for social care?

Modelling the impact of preventive interventions on adult social care
01/01/2024 - 30/09/2025

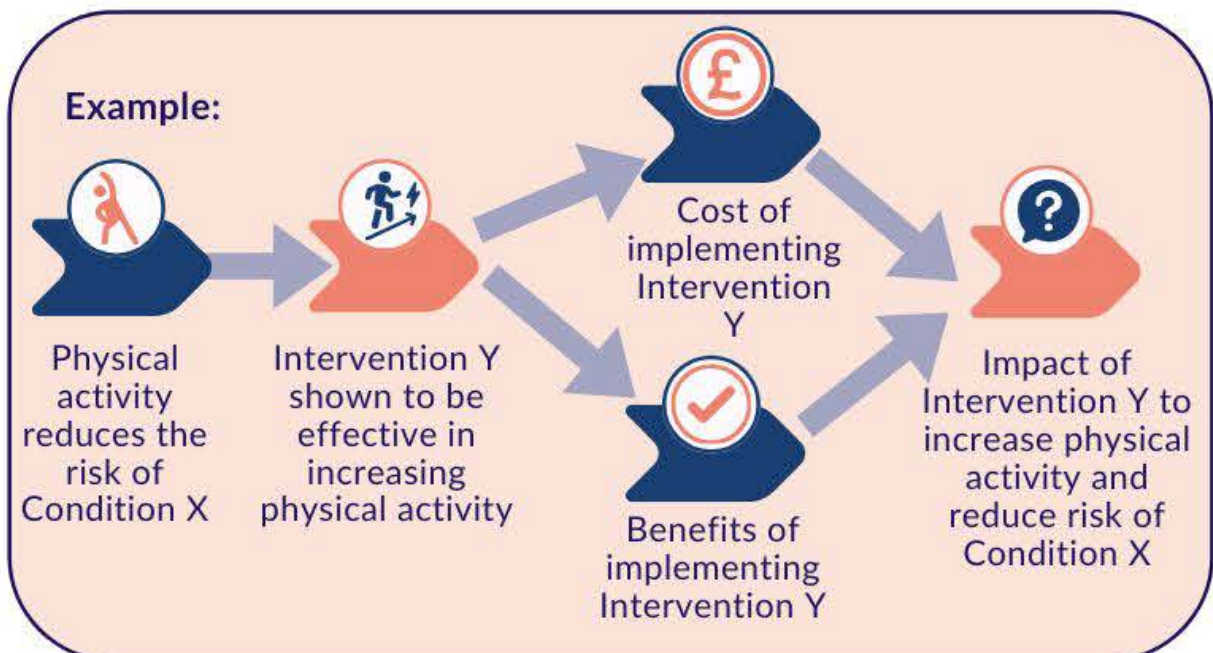
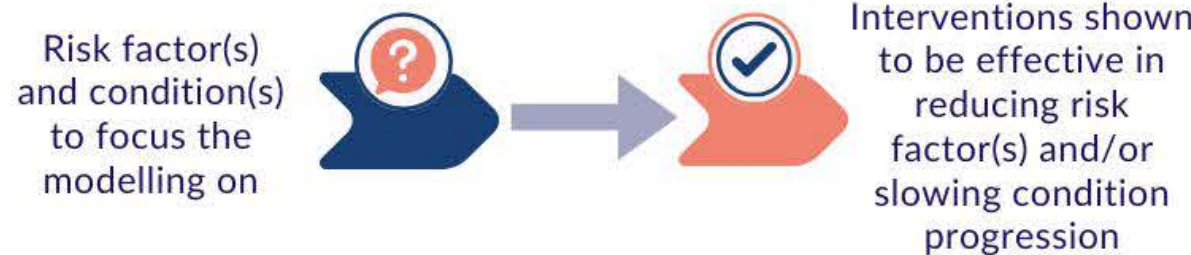


- Neurodegenerative conditions**
- Dementia (all types)
 - Parkinson's disease
 - Motor neurone disease

Methodology



- Review 1**
Identify the impact of neurodegenerative conditions on social care, including unpaid care
- Review 2**
Identify the main modifiable risk factors of neurodegenerative conditions
- Review 3**
Identify preventive interventions for neurodegenerative conditions, which can:
- reduce risk
 - delay onset in high-risk groups
 - maintain functioning and independence as symptoms develop
 - reduce the need for social care



Policy relevance and planned outputs

Quantifying the impact of preventive interventions, including the demand for social care, will provide evidence to inform policy discussion about which approaches create the **greatest benefit** and **at what public and private cost**.

- Putting evidence into your hands**
- project reports with clear policy recommendations
 - accessible summaries for people affected by neurodegenerative conditions and the general public
 - promoting findings in webinars, conferences and more
-